



2025 Season Passholder Information

Welcome to The Track

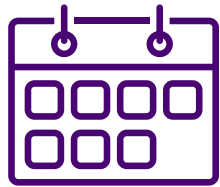
We are not some fancy course like Pebble or Cabot, nor do we pretend to be. We are not "nestled" anywhere and yet our Rocky Mountain views are breathtaking and spectacular.

We are by far the most unpretentious golf course around. Our purpose is to provide value to our customers in a fun and inclusive setting. We are passionate about service and innovation by looking at every possible way to enhance the time you spend with us.

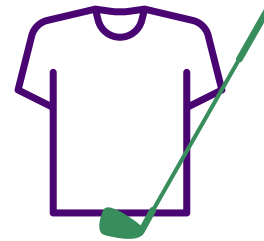
We offer a number of different seasons pass options to meet the needs of our golfing community. We hope that you want to join us for great experiences, amazing camaraderie and an awesome golf season at The Track.



The following applies to all of our Seasons Passes. You really can't go wrong with a pass, it's just time to choose the one that best suites your golfing needs!



8 Days Advanced Booking



Pro Shop Pricing Discounts



Guest Green Fee Pricing
(20% Discount)



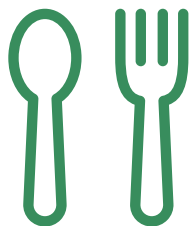
Golf Canada Membership
(Includes coverage for broken
glass/windows)



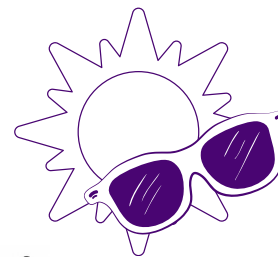
Access to participate in
leagues, events and
programs
(Entry fees for events or programs are
not included in the Season Pass fee)



Practice. With the ability to
purchase a driving range
season pass



Be the first to know about
BackTrack Lounge specials



A Summer of Fun Spent
Outside at The Track

Unlimited Pass

Unlimited Play 7 Days a Week

	Until Dec 15/24	Until March 31/25	After March 31/25
Adult Individual	\$1, 939	\$2, 049	\$2, 149
Senior Individual <small>Over 60 years of age before July 1 2025</small>	\$1, 809	\$1, 879	\$1, 939
Adult Couple	\$3, 619	\$3, 869	\$3, 909
Senior Couple	\$3, 359	\$3, 469	\$3, 639
Young Professional <small>27 - 32 Years of age before July 1 2025</small>	\$1, 359	\$1, 389	\$1, 429
Intermediate <small>19- 26 Years of age before July 1 2025</small>	\$1, 099	\$1, 139	\$1, 189
Junior	\$259	\$309	\$349
Family <small>2 Adults and 2 Juniors (Juniors under 19 years of age before July 1 2025)</small>	\$3, 749	\$3, 989	\$3, 999

The Track reserves the right to limit the number of passes sold in each category

Limited Pass

Monday - Friday

	Until Dec 15/24	Until Mar 31/25	After Apr 1/25
Adult Individual	\$1, 609	\$1, 659	\$1, 699
Senior Individual	\$1, 529	\$1, 549	\$1, 609
Adult Couple	\$2, 829	\$2, 949	\$3, 079
Senior Couple	\$2, 539	\$2, 589	\$2, 709

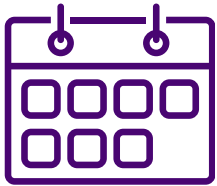
Pass valid Monday to Friday, not including holidays.

Limited Passholders are permitted to participate in club events, and will be subject to a discounted green fee if they event occurs on a Saturday, Sunday or Holiday.

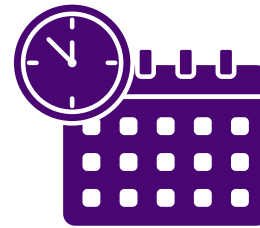
The Track reserves the right to limit the number of passes sold in each category

Twilight Golf

The Track has designed TWO passes for avid twilight golfers. Introduce the game of golf to your children and spend quality time together as a family with our Family Matters Pass. Kids grown or no kids in the picture? Try our NEW Couple's Twilight Pass. Designed for couple's who love golf, and want to get out after work for 9 holes.



3 Days Advanced Booking



Tee-times available after:

March - 4 pm	July - 5 pm
April - 4 pm	August - 5 pm
May - 5 pm	September - 4 pm
June - 5 pm	October - 3pm



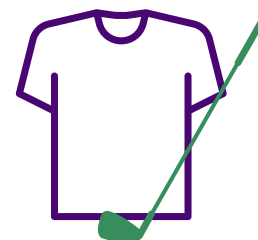
1 Complimentary Power Cart for 9 Holes within the pass tee times



Playing outside the times above?
40% off Green Fees Mon - Fri
30% off Green Fees Sat & Sun



Access to participate in club leagues, events and programs
(Entry fees for events or programs are not included in the Season Pass fee)



Pro Shop Pricing Discounts



Guest Green Fee Pricing
(20% Discount)



Special Rate on Golf Canada Membership
(Includes coverage for broken glass/windows)

Twilight Golf Passes

	Until Dec 15/24	Until March 31/25	After March 31/25
Family Matters	\$1, 329	\$1, 369	\$1, 429
Couple's Twilight	\$1, 777	\$1, 829	\$1, 899

- Family Matters: 9 Holes of golf per evening (based on availability for up to 4 members of your family. Family members must reside in the same household and up to a maximum of 2 adults.
- Couple's Twilight: 9 Holes of golf per evening (based on availability) for the 2 named adult members of this pass. Family members must reside in the same household.
- Management can customize this membership for a family that has intermediate aged children that may wish to play on the family membership. The final price of the Season Pass will be subject to change based on the specific make-up of the family request.

Power Cart Pass

	Until Dec 15/24	Until March 31/25	After March 31/25
Individual Cart (Seat Only)	\$799	\$819	\$849
Individual Cart (Full cart, single)	\$1,089	\$1,099	\$1,199
Couple Cart (1 Cart)	\$1,409	\$1,449	\$1,549

Driving Range Pass

(For Passholders)

Individual Adult	\$199	\$219	\$239
Couple	\$309	\$329	\$379
Family	\$419	\$479	\$529
Junior	\$149	\$169	\$199

General Notes

1. Passes are not transferrable.
2. Passes expire at the end of the 2025 season.
3. All passes are subject to 5% GST
4. General Holidays in 2025 include:
 - May 19, 2025 - Victoria Day
 - July 1, 2025 - Canada Day
 - August 4, 2025 - Heritage Day
 - September 1, 2025- Labour Day
 - October 13, 2025- Thanksgiving
 - November 11, 2025 - Remembrance day
5. Passholders have an 8-day advanced booking window online through the Tee-On booking engine. The tee sheet will open at 6:00 am for booking for the 8- day window. Online booking is strongly encouraged. Booking can also be done by calling the Pro Shop at (403) 936-3644 during operating hours.



Catch you at The Track in 2025.

#golfthetrack

— THE — 
TRACK
— LANGDON —